

2022



CATÁLOGO





ILV es una empresa internacional con presencia comercial en Europa, Asia y Latino América, comenzando operaciones en México en el año 2015 y siendo una empresa joven en el sector nacional del medio de las tecnologías LED, hemos alcanzado hoy en día la posición entre las 10 primeras marcas de renombre en este sector.

Nuestras 6 plantas de alta especialidad en tecnología LED, son nuestra carta de presentación.

Siendo unas de las primeras empresas fabricantes de bombilla LED en suelo mexicano, con robots de alta tecnología y alta calidad.



NOSOTROS

MISIÓN

Dar solución a la necesidad de nuestros clientes, con nuestros productos y servicios innovadores.

VISIÓN

Como nuestro nombre lo indica ILV (iluminación verde), es una empresa comprometida en buscar soluciones amigables con el medio ambiente.

VALORES

Nos hemos comprometido a proporcionar a los consumidores productos de tecnología en iluminación LED, ecológicos y económicos que son de alta eficiencia con ahorro de energía y con buena relación precio-calidad.



Profesionalismo



Innovación



Calidad



Honestidad



Compromiso



Fabricantes





QPG50-07-01LY	06
QPA60-12-01LY	06
QP-010-01L	06
QPA70-15-01LY	07
QP-013-01L	07
G45-005-01L	07
QP-005-01L	07
QP-015-01L	08
QP-018-01L	08
QPC37-07-01YL	08
QPC37-07-02YL	08
QPY38-09-01LC	09
QPY38-09-02LC	09
QPY45-09-01LC	09
QPY45-09-02LC	09
QPC37-07-01L	09
QPC37-07-02L	09
T120AL-40-01	10
GU10GC-05-01	11
GU10GC-05-02	11
MR16-07-01	12
MR16-07-02	12
GU10-07-01	12
GU10-07-02	12
MR16-03-01	12
MR16-03-02	12
GU10-03-01	12
GU10-03-02	12
BL-18-01	13
BL-18-02	13
BL-18CL-01	13
BL-18CL-02	13
BL-12-01	13
BL-20CL-01	13
ZWPCT8-020-02	14
ZWPCT8-020-02CL	14
ZWPCT8-030-02	14
ZWPCT8-030-02CL	14
ZWPCT8-036-02	14



ZWPCT8-036-02CL	14
DS60-04-02	15
DS64-04-02	15
DSG80-04-02	15
DSG95-04-02	15
DSC35-04-02	16
DSPT70-03-06LC	16
DSP130-03-06LC	17
DSP105-03-06LC	17
DSP75-03-06LC	17
DS95-02-RGB	18
DSG80-02-RGB	18
SD-06-01LCSR	19
SD06-02LCSR	19
MPB-05-01LCSR	19
MPB-05-02LCSR	19
MPB-09-01LCSR	19
MPB-09-02LCSR	19
MPB-12-01LCSR	19
MPB-12-02LCSR	19
MPDAJ-06-01SR	20
MPDAJ-06-02SR	20
MPDAJ-08-01SR	20
MPDAJ-08-02SR	20
MPDAJ-015-01SR	20
MPDAJ-015-02SR	20
MPDAJ-020-01SR	20
MPDAJ-020-02SR	20
MPBAJ-10-01SR	21
MPBAJ-10-02SR	21
MPBAJ-18-01SR	21
MPBAJ-18-02SR	21
MPBAJ-24-01SR	21
MPBAJ-24-02SR	21
MPBAJ-36-01SR	21
MPBAJ-36-02SR	21
MPBAJ-10-01SC	22
MPBAJ-10-02SC	22
MPBAJ-18-01SC	22



MPBAJ-18-02SC	22
MPBAJ-24-01SC	22
MPBAJ-24-02SC	22
MPBAJ-36-01SC	22
MPD-006-01SC	23
MPD-006-02SC	23
MPD-009-01SC	23
MPD-009-02SC	23
MPD-012-01SC	23
MPD-012-02SC	23
MPD-015-01SC	23
MPD-015-02SC	23
MPD-018-01SC	23
MPD-018-02SC	23
MPD-024-01SC	23
MPD-024-02SC	23
MPBAJFC-09-01SR	24
MPBAJFR-09-02SR	24
MPBAJFC-15-01SR	24
MPBAJFC-15-01SR	24
MPBAJFC-24-01SR	24
MPBAJFC-24-02SR	24
MPBAJFC-36-01SR	24
MPBAJFC-36-02SR	24
MPD-006-01SR	25
MPD-006-02SR	25
MPD-009-01SR	25
MPD-009-02SR	25
MPD-012-01SR	25
MPD-012-02SR	25
MPD-015-01SR	25
MPD-015-02SR	25
MPD-018-01SR	25
MPD-018-02SR	25
MPD-024-01SR	25
MPD-024-02SR	25
MPD-006-01FR	26
MPD-006-02FR	26
MPD-012-01FR	26



MPD-012-02FR	26
MPD-018-01FR	26
MPD-018-02FR	26
MPD-025-01FR	26
MPD-025-02FR	26
MPB12030-050-01SC	27
MPB12030-050-02SC	27
MPB12060-100-01SC	27
MPB12060-100-02SC	27
MPD-048-01SC	27
MPD-048-02SC	27
MPB-050-01SC	27
MPB-050-02SC	27
MPB-070-01SC	28
MPB-070-02SC	28
BD-12-01LCFC	29
BD-12-02LCFC	29
BD-18-01LCFC	29
BD-18-02LCFC	29
BD-12-01LCFC	29
BD-12-02LCFC	29
BD-18-01LCFC	29
BD-18-02LCFC	29
MPD-018-01FC	30
MPD-018-02FC	30
MPD-025-01FC	30
MPD-025-02FC	30
MPD-006-01FC	30
MPD-006-02FC	30
MPD-012-01FC	30
MPD-012-02FC	30
XDD300-25-01	31
XDD400-35-01	31
XDD500-50-01	31
PAR30-30-01	32
DT2835-120D-6MM-127V-03	33
DT2835-120D-6MM-127V-04	33
DT2835-120D-6MM-127V-05	33
DT2835-120D-6MM-127-01/SET	33



DT2835-120D-6MM-127-02/SET	33
DT2835-120D300-8MM-127V-01	34
DT2835-120D300-8MM-127V-02	34
TGDLJ-400-01	35
TGDLJ-50-01	36
TGDLJ-100-01	36
TGDLJ-150-01	36
TGDLJ-200-01	36
TGDLT-50-01	37
TGDLT-100-01	37
TGDLT-150-01	37
TGDLT-200-01	38
TGDHS-50-01LC	39
TGDHS-10-01LC	40
TGDHS-20-01LC	40
TGDHS-30-01LC	40
GKQPSM-10-01	41
GKQPSM-150-01	41
GKQPSM-200-01	41
GKUFO-100-01	42
GKUFO-150-01	42
GKUFO-200-01	42
BJ-050-01	43
BJ-100-01	43
BJ-150-01	43
BJ-200-01	43
LDDX-045-01	44
LDDX-060-01	44
LDDX-100-01	44
LDDX-150-01	44
LDDF-050-01	45
LDDF-100-01	45
LDDF-150-01	46
LDDF-200-01	46
LDFY-60-01	47
LDFY-100-01	47
LDFY-150-01	47
LDFY-200-01	47
LD-42-01	48



BDAX-50-01	48
TYDAX-100-01	48
SOLLT-050-01	49
SOLLT-100-01	49
SOLLT-150-01	49
SOLLT-200-01	49
SOLLJ-050-01	50
SOLLJ-100-01	50
SOLLJ-150-01	50
SOLLJ-200-01	50
SOLLD-50-01	51
SOLLD-100-01	51
SOLLD-200-01	51
SOLBDAX-300-01	52
SOLLDAX-150-01	52
TG-01V-0050-01A	53
TG-01V-0100-01A	53
LD-01V-0100-01A	54
LD-01V-0200-01A	54
LED LUZ	
PVCT-018-01	01
PVCT8-018CL-01	01
PVCJH-036-01	01
PVCJH-036CL-01	01
PVCT8-036CL-01	01
T80-18-01L	02
T100-25-01L	02
T120-35-01L	02
T135-45-01L	03
QP-010-01	03



EL INVENTO ÚNICO EN EL MUNDO

Disipador de aluminio con portalámparas integrado patentado



1 Difusor opalescente de alta transmitencia de luz

2 Alma de aluminio con forro termoplastico

3 Circuito en una sola pieza

4 Mejor conductividad eléctrica

5 Alta capacidad antioxidante, prueba de aerosol de sal



chip led selecto



vida útil larga, ahorro de energía



Múltiples entornos



6500K

QPG50-07-01LY
50*90mm

7W



700lm



200°



100-130V



15000h



E27



80



6500K

QPA60-12-01LY
60*110mm

12W



1200lm



200°



100-130V



15000h



E27



80



6500K

QP-010-01L
60*107mm

10W



850lm



200°



127V



15000h



E27



80



MEXICO



QPA70-15-01LY
70*130mm

◀ 6500K
15W

- 1500lm
- 200°
- 100-130V
- 15000h
- E27
- CRI 80



QP-013-01L
60*116mm

◀ 6500K
13W

- 1250lm
- 200°
- 127V
- 15000h
- E27
- CRI 80



QP-015-01L
70*131mm

◀ 6500K
15W

- 1400lm
- 200°
- 127V
- 15000h
- E27
- CRI 80



QP-018-01L
80*140mm

◀ 6500K
18W

- 1650lm
- 200°
- 127V
- 15000h
- E27
- CRI 80



G45-005-01L
45*78mm
QP-005-01L
50*88mm

◀ 6500K
5W

- 480lm
- 200°
- 127V
- 15000h
- E12/E27
- CRI 80



QPC37-07-01YL
QPC37-07-02YL
C37

◀ 6500K
◀ 3000K
7W

- ◀ 700lm
◀ 660lm
- 200°
- 127V
- 15000h
- E12
- CRI 80





QPY38-09-01LC
QPY38-09-02LC
38*114mm

◀ 6500K
▶ 3000K
9W

▶ 900 lm
 200°
 110-130V
 15000h
 CRI 80
 E27



QPY45-09-01LC
QPY45-09-02LC
45*138mm

◀ 6500K
▶ 3000K
12W

▶ 1200 lm
 200°
 110-130V
 15000h
 CRI 80
 E27



QPC37-07-01L
QPC37-07-02L
C37

◀ 6500K
▶ 3000K
7W

▶ 700lm
 200°
 127V
 15000h
 E12/E27
 CRI 80



T120AL-40-01
116*203mm

◀ 6500K
40W

▶ 4000lm
 250°
 85-265V
 25000h
 CRI 80
 E27




GU10GC-05-01
GU10GC-05-02
 50*54mm

◀ 6500K
 ▶ 3000K
5W

 ▶ 420lm
 ▶ 380lm

 38°
 127V
 15000h
 GU10
 80



MR16-07-01
MR16-07-02
 50*54mm

◀ 6500K
 ▶ 3000K
7W

 ▶ 700lm
 ▶ 630lm

 38°
 127V
 15000h
 MR16
 80



GU10-07-01
GU10-07-02
 50*54mm

◀ 6500K
 ▶ 3000K
7W

 ▶ 700lm
 ▶ 630lm

 38°
 127V
 15000h
 GU10
 80



MR16-03-01
MR16-03-02
 49*60mm

◀ 6500K
 ▶ 3000K
3W

 ▶ 260lm
 ▶ 220lm

 38°
 127V
 15000h
 MR16
 80



GU10-03-01
GU10-03-02
 49*50mm

◀ 6500K
 ▶ 3000K
3W

 ▶ 260lm
 ▶ 220lm

 38°
 127V
 15000h
 GU10
 80



BL-18-01
BL-18-02
1200mm

◀ 6500K
▶ 3000K
18W

BL-18CL-01
BL-18CL-02
1200mm

◀ 6500K
▶ 3000K
18W

◀ 1800lm
▶ 1600lm

270°

85-265V

15000h

CRI 80

◀ 1800lm
▶ 1600lm

270°

85-265V

15000h

CRI 80

BL-20-01
BL-20CL-01
1200mm

◀ 6500K
▶ 3000K
20W

◀ 2200lm
▶ 2000lm

200°

85-265V

15000h

CRI 80

ZWPCT8-020-02
ZWPCT8-020-02CL
1500mm

◀ 3500K
20W

2800lm
2900lm

210°

100-265V

30000h

CRI 85

Lámpara vegetal

ZWPCT8-030-02
ZWPCT8-030-02CL
1800mm

◀ 3500K
30W

3500lm
3600lm

210°

100-265V

30000h

CRI 85

Lámpara vegetal

ZWPCT8-036-02
ZWPCT8-036-02CL
1800mm

◀ 3500K
36W

4300lm
4400lm

210°

100-265V

30000h

CRI 85

Lámpara vegetal



DS60-04-02
60*105mm

◀ 2700K
4W



380lm 330° 110-130V 15000h E27 80



DS64-04-02
64*145mm

◀ 2700K
4W



380lm 330° 110-130V 15000h E27 80



DSC35-04-02
35*125mm

◀ 2700K
4W



380lm 330° 110-130V 15000h E12 80



DSG80-04-02
80*118mm

◀ 2700K
4W



380lm 330° 110-130V 15000h E27 80



DSG95-04-02
95*136mm

◀ 2700K
4W



380lm 330° 110-130V 15000h E27 80



DSPT70-03-06LC
70*220mm

◀ 1800K
3W



280lm 330° 110-130V 15000h E27 80





DSP130-03-06LC
130*220mm

◀ 1800K
3W



DSP105-03-06LC
105*225mm

◀ 1800K
3W



DSP75-03-06LC
75*160mm

◀ 1800K
3W



DS95-02-RGB
95*140mm

RGB
2W



DSG80-02-RGB
80*118mm

RGB
2W





SD-06-01LCSR
SD-06-02LCSR
Ø 88*30mm

◀ 6500K
◀ 3000K
6W

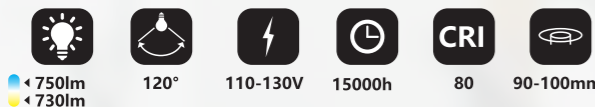


◀ 600lm
◀ 580lm 38° 110-130V 15000h 80 75mm



MPB-09-01LCSR
MPB-09-02LCSR
Ø 115*44mm

◀ 6500K
◀ 3000K
9W

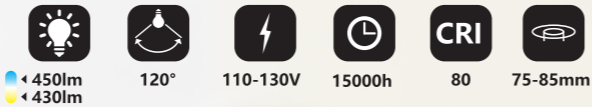


◀ 750lm
◀ 730lm 120° 110-130V 15000h 80 90-100mm



MPB-05-01LCSR
MPB-05-02LCSR
Ø 98*41mm

◀ 6500K
◀ 3000K
5W



◀ 450lm
◀ 430lm 120° 110-130V 15000h 80 75-85mm



MPB-12-01LCSR
MPB-12-02LCSR
Ø 140*47mm

◀ 6500K
◀ 3000K
12W

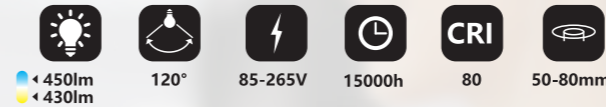


◀ 1000lm
◀ 950lm 120° 110-130V 15000h 80 115-125mm



MPDAJ-06-01SR
MPDAJ-06-02SR
Ø 100*23mm

◀ 6500K
◀ 3000K
6W



◀ 450lm
◀ 430lm 120° 85-265V 15000h 80 50-80mm



MPDAJ-015-01SR
MPDAJ-015-02SR
Ø 175*23mm

◀ 6500K
◀ 3000K
15W



◀ 1200lm
◀ 1150lm 120° 85-265V 15000h 80 50-165mm



MPDAJ-08-01SR
MPDAJ-08-02SR
Ø 120*23mm

◀ 6500K
◀ 3000K
8W



◀ 600lm
◀ 580lm 120° 85-265V 15000h 80 50-100mm



MPDAJ-020-01SR
MPDAJ-020-02SR
Ø 230*23mm

◀ 6500K
◀ 3000K
20W



◀ 1500lm
◀ 1400lm 120° 85-265V 15000h 80 50-210mm



MPBAJ-10-01SR
MPBAJ-10-02SR
Ø 100*22mm

◀ 6500K
◀ 3000K
10W



◀ 1100lm
◀ 1000lm
120° 100-265V 15000h 80 55-70mm



MPBAJ-18-01SR
MPBAJ-18-02SR
Ø 119*22mm

◀ 6500K
◀ 3000K
18W



◀ 1800lm
◀ 1700lm
120° 100-265V 15000h 80 55-90mm



MPBAJ-24-01SR
MPBAJ-24-02SR
Ø 168*22mm

◀ 6500K
◀ 3000K
24W



◀ 2400lm
◀ 2300lm
120° 100-265V 15000h 80 55-135mm

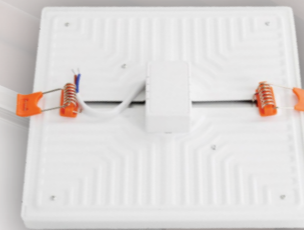


MPBAJ-36-01SR
MPBAJ-36-02SR
Ø 221*22mm

◀ 6500K
◀ 3000K
36W



◀ 3600lm
◀ 3500lm
120° 100-265V 15000h 80 55-185mm



MPBAJ-10-01SC
MPBAJ-10-02SC
100*22mm

◀ 6500K
◀ 3000K
10W



◀ 1100lm
◀ 1000lm
120° 100-265V 15000h 80 55-70mm



MPBAJ-24-01SC
MPBAJ-24-02SC
170*22mm

◀ 6500K
◀ 3000K
24W



◀ 2400lm
◀ 2300lm
120° 100-265V 15000h 80 55-135mm

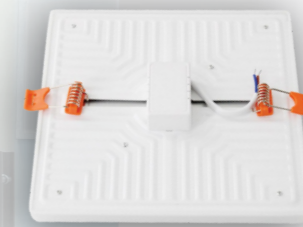


MPBAJ-18-01SC
MPBAJ-18-02SC
119*22mm

◀ 6500K
◀ 3000K
18W



◀ 1800lm
◀ 1700lm
120° 100-265V 15000h 80 55-90mm



MPBAJ-36-01SC
222*22mm

◀ 6500K
◀ 3000K
36W



◀ 3600lm
◀ 3500lm
120° 100-265V 15000h 80 55-185mm




MPD-006-01SC
MPD-006-02SC
118*118*11mm

◀ 6500K
◀ 3000K
6W

◀ 400lm
◀ 380lm

120° 85-265V 15000h 80 95*95mm



MPD-009-01SC
MPD-009-02SC
143*143*11mm

◀ 6500K
◀ 3000K
9W

◀ 630lm
◀ 600lm

120° 85-265V 15000h 80 120*120mm




MPD-012-01SC
MPD-012-02SC
170*170*11mm

◀ 6500K
◀ 3000K
12W

◀ 840lm
◀ 800lm

120° 85-265V 15000h 80 120-120mm




MPD-015-01SC
MPD-015-02SC
193*193*11mm

◀ 6500K
◀ 3000K
15W

◀ 1050lm
◀ 1000lm

120° 85-265V 15000h 80 160*160mm



MPD-018-01SC
MPD-018-02SC
223*223*11mm

◀ 6500K
◀ 3000K
18W

◀ 1300lm
◀ 1200lm

120° 85-265V 15000h 80 190-190mm



MPD-024-01SC
MPD-024-02SC
300*300*11mm

◀ 6500K
◀ 3000K
24W

◀ 1700lm
◀ 1600lm

120° 85-265V 15000h 80 265-265mm




MPBAJFC-09-01SR
MPBAJFC-09-02SR
Ø 88*13mm

◀ 6500K
◀ 3000K
9W

◀ 720lm
◀ 700lm

120° 85-265V 15000h 80 45-75mm




MPBAJFC-15-01SR
MPBAJFC-15-02SR
Ø 120*13mm

◀ 6500K
◀ 3000K
15W

◀ 1440lm
◀ 1420lm

120° 85-265V 15000h 80 45-105mm




MPBAJFC-24-01SR
MPBAJFC-24-02SR
Ø 171*13mm

◀ 6500K
◀ 3000K
24W

◀ 2200lm
◀ 2150lm

120° 85-265V 15000h 80 45-155mm



MPBAJFC-36-01SR
MPBAJFC-36-02SR
Ø 233*13mm

◀ 6500K
◀ 3000K
36W

◀ 3400lm
◀ 3350lm

120° 85-265V 15000h 80 45-205mm



MPD-006-01SR
MPD-006-02SR
Ø 118*11mm

◀ 6500K
◀ 3000K
6W

- Light bulb icon
- Beam angle icon: 120°
- Voltage icon: 85-265V
- Life span icon: 15000h
- CRI icon: 80
- Depth icon: 95mm



MPD-009-01SR
MPD-009-02SR
Ø 143*11mm

◀ 6500K
◀ 3000K
9W

- Light bulb icon
- Beam angle icon: 120°
- Voltage icon: 85-265V
- Life span icon: 15000h
- CRI icon: 80
- Depth icon: 120mm



MPD-012-01SR
MPD-012-02SR
Ø 170*11mm

◀ 6500K
◀ 3000K
12W

- Light bulb icon
- Beam angle icon: 120°
- Voltage icon: 85-265V
- Life span icon: 15000h
- CRI icon: 80
- Depth icon: 140mm



MPD-015-01SR
MPD-015-02SR
Ø 192*11mm

◀ 6500K
◀ 3000K
15W

- Light bulb icon
- Beam angle icon: 120°
- Voltage icon: 85-265V
- Life span icon: 15000h
- CRI icon: 80
- Depth icon: 160mm



MPD-018-01SR
MPD-018-02SR
Ø 223*11mm

◀ 6500K
◀ 3000K
18W

- Light bulb icon
- Beam angle icon: 120°
- Voltage icon: 85-265V
- Life span icon: 15000h
- CRI icon: 80
- Depth icon: 190mm



MPD-024-01SR
MPD-024-02SR
Ø 300*11mm

◀ 6500K
◀ 3000K
24W

- Light bulb icon
- Beam angle icon: 120°
- Voltage icon: 85-265V
- Life span icon: 15000h
- CRI icon: 80
- Depth icon: 265mm



MPD-006-01FR
MPD-006-02FR
Ø 90*28mm

◀ 6500K
◀ 3000K
6W

- Light bulb icon
- Beam angle icon: 120°
- Voltage icon: 85-265V
- Life span icon: 15000h
- CRI icon: 80



MPD-012-01FR
MPD-012-02FR
Ø 142*28mm

◀ 6500K
◀ 3000K
12W

- Light bulb icon
- Beam angle icon: 120°
- Voltage icon: 85-265V
- Life span icon: 15000h
- CRI icon: 80



MPD-018-01FR
MPD-018-02FR
Ø 192*28mm

◀ 6500K
◀ 3000K
18W

- Light bulb icon
- Beam angle icon: 120°
- Voltage icon: 85-265V
- Life span icon: 15000h
- CRI icon: 80



MPD-025-01FR
MPD-025-02FR
Ø 265*28mm

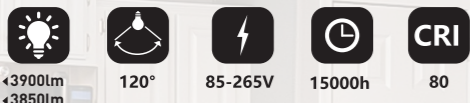
◀ 6500K
◀ 3000K
25W

- Light bulb icon
- Beam angle icon: 120°
- Voltage icon: 85-265V
- Life span icon: 15000h
- CRI icon: 80



MPB12030-050-01SC
MPB12030-050-02SC
1200*300*30mm

◀ 6500K
▶ 3000K
50W



MPB12060-100-01SC
MPB12060-100-02SC
1200*600*30mm

◀ 6500K
▶ 3000K
100W



MPD-048-01SC
MPD-048-02SC
600*24mm

◀ 6500K
▶ 3000K
48W



MPB-050-01SC
MPB-050-02SC
600*24mm

◀ 6500K
▶ 3000K
50W



MPB-070-01SC
MPB-070-02SC
600*24mm

◀ 6500K
▶ 3000K
70W





BD-12-01LCFC
BD-12-02LCFC
Ø150*35mm

◀ 6500K
◀ 3000K
12W



BD-18-01LCFC
BD-18-02LCFC
Ø172-35mm

◀ 6500K
◀ 3000K
18W



BD-12-01LCFC
BD-12-02LCFC
158*83*35mm

◀ 6500K
◀ 3000K
12W



BD-18-01LCFC
BD-18-02LCFC
193*94*35mm

◀ 6500K
◀ 3000K
18W



MPD-018-01FC
MPD-018-02FC
192*28mm

◀ 6500K
◀ 3000K
18W



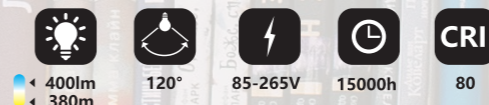
MPD-025-01FC
MPD-025-02FC
265*28mm

◀ 6500K
◀ 3000K
25W



MPD-006-01FC
MPD-006-02FC
90*90*28mm

◀ 6500K
◀ 3000K
6W



MPD-012-01FC
MPD-012-02FC
142*28mm

◀ 6500K
◀ 3000K
12W





6500K
25W

XDD300-25-01
Ø 300*32mm



6500K
35W

XDD400-35-01
Ø 400*42mm



6500K
50W

XDD500-50-01
Ø 500*50.5mm



4000-6500K
30W

PAR30-30-01
Ø 120*93mm





MB10V-0012-01A
MB10V-0012-02A
Ø 118*11mm

◀ 6500K
◀ 3000K
12W



MB10V-0018-01A
MB10V-0018-02A
Ø 170*11mm

◀ 6500K
◀ 3000K
18W



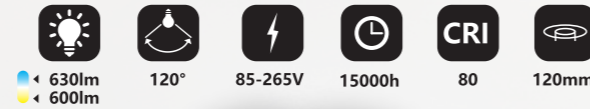
MB12V-0015-01A
Ø 223*11mm

◀ 6500K
15W



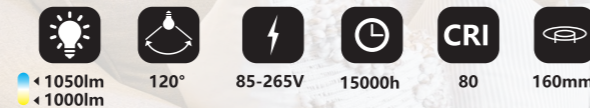
MB10V-0015-01A
MB10V-0015-02A
Ø 143*11mm

◀ 6500K
◀ 3000K
15W



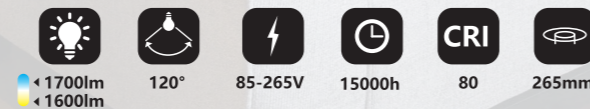
MB12V-0012-01A
Ø 192*11mm

◀ 6500K
12W



MB12V-0018-01A
Ø 300*11mm

◀ 6500K
18W



MB-11V-0007-01A
MB-11V-0007-02A
Ø 90*28mm

◀ 6500K
◀ 3000K
12W



MB-11V-0010-01A
MB-11V-0010-02A
Ø 142*28mm

◀ 6500K
◀ 3000K
25W





NEON2835/5050



1 SE PUEDE CORTAR
En la tira de luz se marca la posición donde se puede cortar cada metro



2 CONECTOR DE TIRAS EN SERIE
Alinee las tiras de luz cortadas con orificios de los cables y conéctelas en serie



3 TAPÓN FINAL
Use un tapón final para evitar fugas.



4 FIJADOR DE TIRA
De plástico para fijar las tiras



DT2835AJ



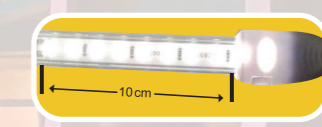
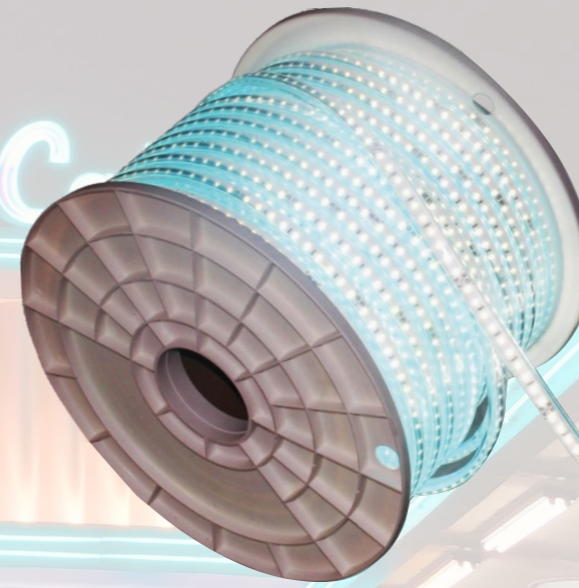
5 PIN H
Inserte el PIN en el terminal positivo de la tira luz



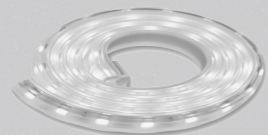
6 ENCHUFE

RECÓRTALA A TU GUSTO

Se puede cortar cada 10cm



Potencia	PCB de ancho	Longitud de Corte:	Lumen (cada SMD)	Volts	Fuente de Luz	Lúmenes	CRI	IP	Garantía	Tamaño Externo	Presentación
DT2835AJ-100D-10MM-127V-01/02/03/04/05/09											
9-10W/M	10mm	100mm	50-55LM	127V	SMD2835 100pcs/M	900LM	80	65	2 Años	14.5*8.5mm	rollo de 300m
DT5730AJ-100D-10MM-127V-01/02/03/04/05/09											
9-10W/M	10mm	100mm	50-55LM	127V	SMD5730 100pcs/M	900LM	80	65	2 Años	14.5*8.5mm	rollo de 300m



DD-03V-0007-01A
50m

8WxM



560 lm x m



110-130v



15000h



80



DD-03V-0007-04A
50m

8WxM



560 lm x m



110-130v



15000h



80



DD-03V-0007-05A
50m

8WxM



560 lm x m



110-130v



15000h



80



DD-03V-0007-09A
50m

8WxM



560 lm x m



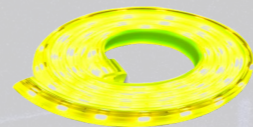
110-130v



15000h



80



DD-03V-0007-10A
50m

8WxM



560 lm x m



110-130v



15000h



80



DD-03V-0007-11A
50m

8WxM



560 lm x m



110-130v



15000h



80



DD-03V-0007-07A
50m

8WxM



560 lm x m



110-130v



15000h



80



DD-05-0007-01
5m

8WxM



560 lm x m 110-130v 15000h 80



DD-05V-0007-04A
5m

8WxM



560 lm x m 110-130v 15000h 80



DD-05V-0007-09A
5m

8WxM



560 lm x m 110-130v 15000h 80



DD-05V-0007-10A
5m

8WxM



560 lm x m 110-130v 15000h 80



DD-05V-0007-05A
5m

8WxM



560 lm x m 110-130v 15000h 80

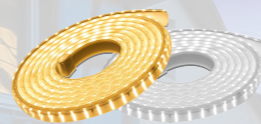
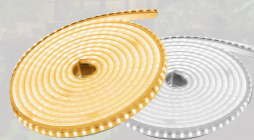


DD-05V-0007-11A
5m

8WxM



560 lm x m 110-130v 15000h 80



DD-02V-0007-01A
DD-02V-0007-02A
50m

8WxM



560 lm x m



110-130v



15000h



80



560 lm x m



110-130v



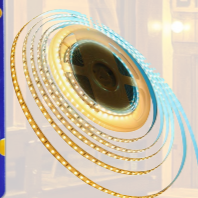
15000h



80

DD-02V-0010-01A
DD-02V-0010-02A
50m

8WxM



DD-04V-0010-01A
DD-04V-0010-02A
5m

8WxM



560 lm x m



110-130v



15000h



80



DD-06V-0010-07A
5m

10WxM



560 lm x m



110-130v



15000h



80




TGDLJ-400-01
370*37*380mm

46500K

400W

29000lm 120° 100-265V 15000h IP67 LED DRIVER CRI 80



TGDLJ-50-01
180*37*195mm

46500K

50W

4100lm 120° 100-265V 15000h IP67 DOB DOB CRI 80



TGDLJ-100-01
215*37*225mm

46500K

100W

8200lm 120° 100-265V 15000h IP67 DOB DOB CRI 80



TGDLJ-150-01
270*37*280mm

46500K

150W

11800lm 120° 100-265V 15000h IP67 DOB DOB CRI 80



TGDLJ-200-01
290*37*300mm

46500K

200W

15000lm 120° 100-265V 15000h IP67 DOB DOB CRI 80



6500K

TGDLT-50-01
185*40*185mm

50W



4100lm 120° 100-265V 15000h IP67 DOB DOB 80



6500K

TGDLT-100-01
210*40*230mm

100W



8200lm 120° 100-265V 15000h IP67 DOB DOB 80



6500K

TGDLT-150-01
240*40*285mm

150W



11800lm 120° 100-265V 15000h IP67 DOB DOB 80



6500K

TGDLT-200-01
302*40*338mm

200W



15000lm 120° 100-265V 15000h IP67 DOB DOB 80



6500K

TGDHS-50-01LC
180*30*145mm

50W

- 4500lm
- 120°
- 100-265V
- 15000h
- IP65
- DOB
- CRI 80



6500K

TGDHS-10-01LC
93*30*72mm

10W



6500K

TGDHS-20-01LC
120*30*95mm

20W

- 1000lm
- 120°
- 100-265V
- 15000h
- IP65
- DOB
- CRI 80

- 2000lm
- 120°
- 100-265V
- 15000h
- IP65
- DOB
- CRI 80



6500K

TGDHS-30-01LC
150*30*120mm

30W

- 2800lm
- 120°
- 100-265V
- 15000h
- IP65
- DOB
- CRI 80

17



GKQPSM-100-01
Ø 450*300mm

100W



8200lm 120° 85-265V 20000h 80 IP40



GKQPSM-150-01
Ø 450*310mm

150W



13000lm 120° 85-265V 20000h 80 IP40

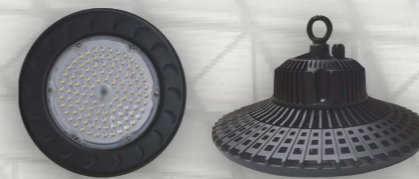


GKQPSM-200-01
Ø 500*320mm

200W



1500lm 120° 85-265V 20000h 80 IP40

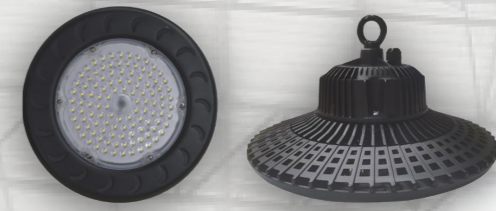


GKUFO-100-01
Ø 280*160mm

100W

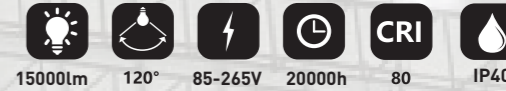


10000lm 120° 85-265V 20000h 80 IP40



GKUFO-150-01
Ø 320*160mm

150W



15000lm 120° 85-265V 20000h 80 IP40



GKUFO-200-01
Ø 360*180mm

200W



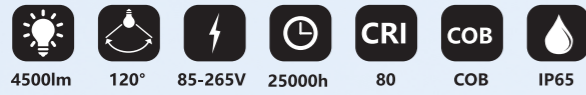
10000lm 120° 85-265V 20000h 80 IP40



6500K

BJ-050-01
500*210*65mm

50W



6500K

BJ-100-01
720*280*80mm

100W



6500K

BJ-150-01
860*320*80mm

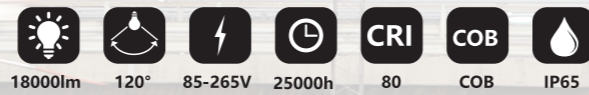
150W



6500K

BJ-200-01
970*360*115mm

200W



5700K

LDDX-045-01
390*105*63mm

45W



5700K

LDDX-060-01
390*138*60mm

60W



5700K

LDDX-100-01
400*190*73mm

100W

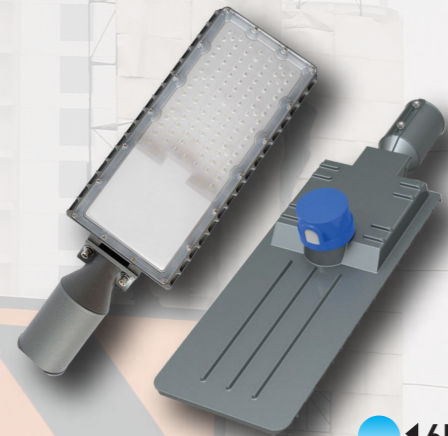


5700K

LDDX-150-01
515*235*73mm

150W

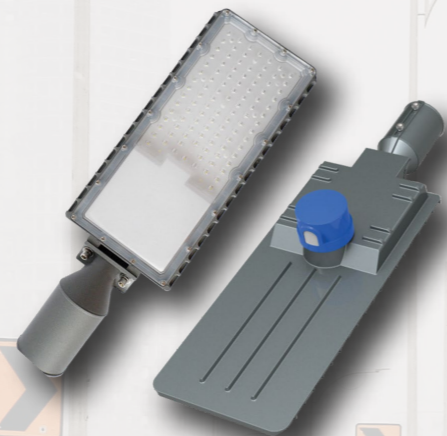




6500K

LDDF-050-01
500*160*83mm

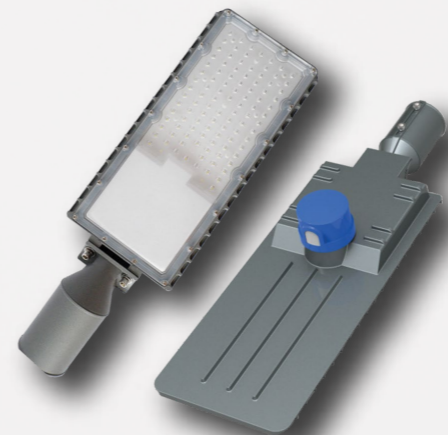
50W



6500K

LDDF-100-01
637*211*83mm

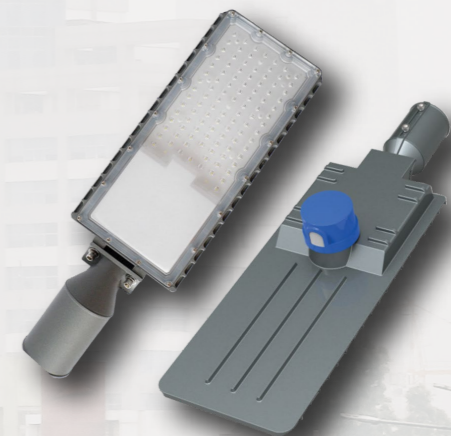
100W



6500K

LDDF-150-01
675*255*83mm

150W



6500K

LDDF-200-01
780*260*83mm

200W





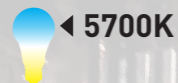
LDFY-60-01
480*200*65mm

60W



LDFY-100-01
570*240*75mm

100W



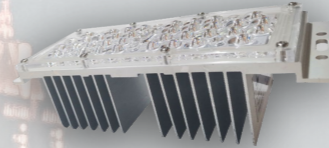
LDFY-150-01
680*295*80mm

150W



LDFY-200-01
370*140*45mm

200W



LD-42-01
200*76*55mm

42W



BDAX-50-01
295*242*156mm

50W



TYDAX-100-01
620*466mm

100W





6500K
50W

SOLLT-050-01
185*40*185mm

- 600lm
- 120°
- 10W
- 15000h
- CRI 80
- 1*5Ah



6500K
100W

SOLLT-100-01
185*40*185mm

- 850lm
- 120°
- 15W
- 15000h
- CRI 80
- 2*5Ah



6500K
150W

SOLLT-150-01
240*40*285mm

- 1300lm
- 120°
- 20W
- 15000h
- CRI 80
- 3*5Ah



6500K
200W

SOLLT-200-01
302*40*338mm

- 1500lm
- 120°
- 25W
- 15000h
- CRI 80
- 3*6Ah



6500K
50W

SOLLJ-050-01
180*37*195mm

- 580lm
- 120°
- 10W
- 15000h
- CRI 80
- 1*5Ah



6500K
100W

SOLLJ-100-01
215*37*255mm

- 780lm
- 120°
- 15W
- 15000h
- CRI 80
- 2*5Ah



6500K
150W

SOLLJ-150-01
270*37*280mm

- 1150lm
- 120°
- 20W
- 15000h
- CRI 80
- 3*5Ah



6500K
200W

SOLLJ-200-01
290*37*300mm

- 1300lm
- 120°
- 25W
- 15000h
- CRI 80
- 3*6Ah



6500K

SOLLD-50-01
400*175*50mm

50W

- 580lm
- 120°
- 10W
- 15000h
- CRI 80
- 2*3.5Ah



6500K

SOLLD-100-01
500*220*50mm

100W

- 780lm
- 120°
- 15W
- 15000h
- CRI 80
- 2*5Ah



6500K

SOLLD-200-01
570*240*50mm

200W

- 1300lm
- 120°
- 25W
- 15000h
- CRI 80
- 4*3.5Ah



6500K

SOLBDAX-300-01
635*156*350mm

300W

- 2000lm
- 120°
- 25W
- 30000h
- CRI 80
- 20Ah

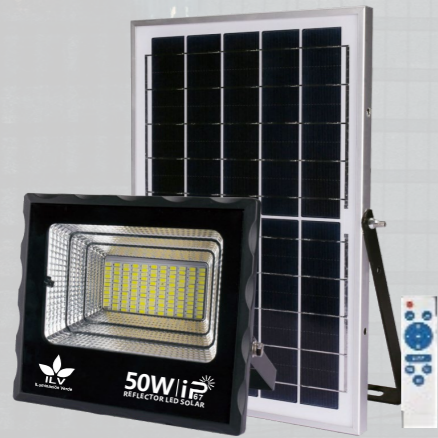


6500K

SOLLDAX-150-01
400*175*50mm

150W

- 3000lm
- 120°
- 45W
- 15000h
- CRI 80
- 4*20Ah



TG-01V-0050-01A
182*156*56mm

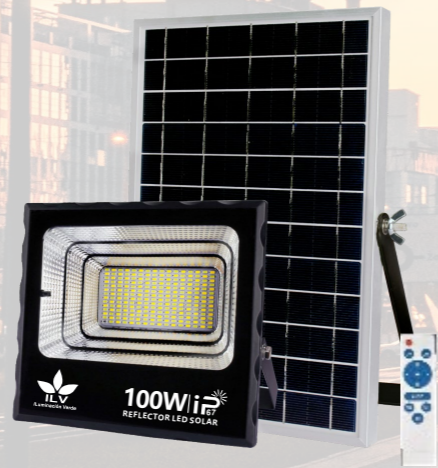
6500K
50W

- 800lm
- 120°
- 6W
- 15000h
- CRI 70
- 3.2V 5AH

6500K
100W

TG-01V-0100-01A
249*221*80mm

- 1250lm
- 120°
- 10W
- 15000h
- CRI 70
- 3.2V 10AH



6500K
100W

LD-01V-0100-01A
500*220*80mm

- 1200lm
- 120°
- 15W
- 15000h
- CRI 70
- 3.2V 10AH

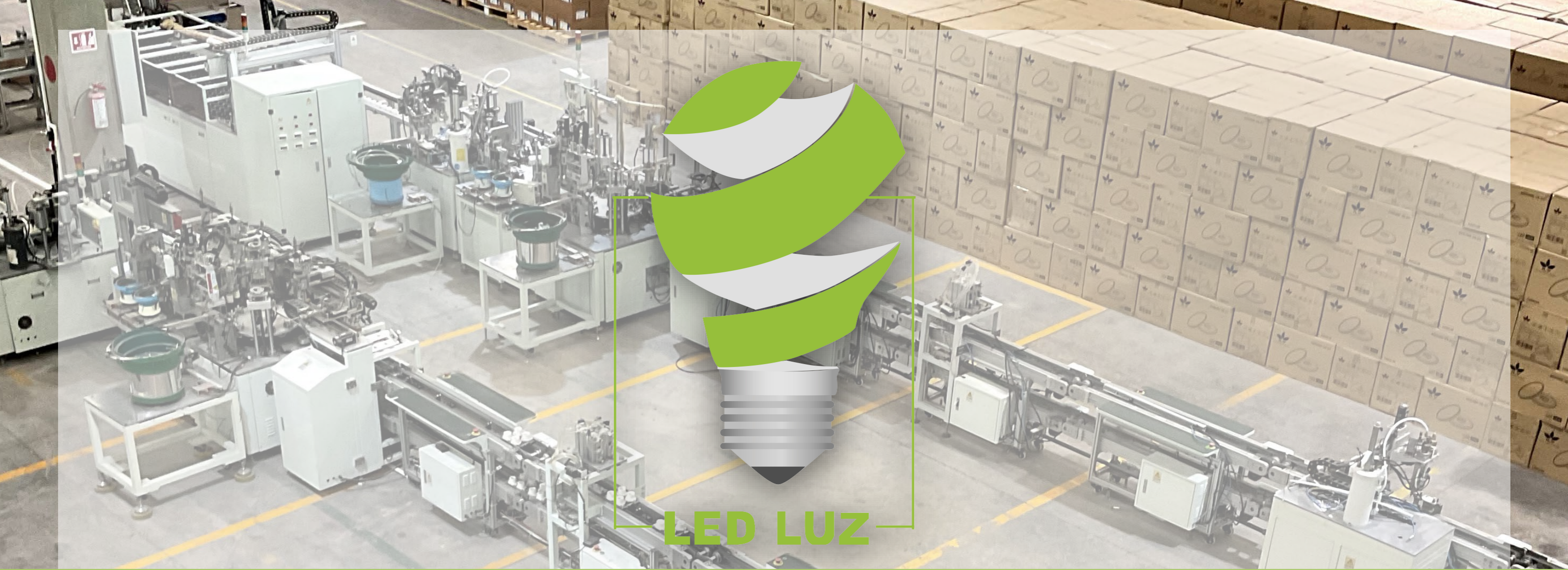


6500K
200W

LD-01V-0200-01A
500*220*80mm

- 1300lm
- 120°
- 25W
- 15000h
- CRI 70
- 3.2V 20AH





LED LUZ



NOM **CE** **RoHS**



PVCT8-018-01
PVCT8-018CL-01
1200mm

◀ 7000K
18W

- 1200lm
1400lm
- 140°
- 110-130V
- 10000h
- CRI 70
- LUZ



PVCJH-036-01
PVCJH-036CL-01
1200mm

◀ 7000K
36W

- 1800lm
2000lm
- 140°
- 110-130V
- 10000h
- CRI 70
- LUZ

PVCT8-036CL-01
1200mm

◀ 7000K
36W

- 2200lm
- 140°
- 110-130V
- 10000h
- CRI 70
- LUZ



T80-18-01L
80*137mm

◀ 7000K
18W

- 1250lm
- 250°
- 110-130V
- 10000h
- E27
- CRI 70
- LUZ



T100-25-01L
100*166mm

◀ 7000K
25W

- 2000lm
- 250°
- 110-130V
- 10000h
- E27
- CRI 70
- LUZ



T120-35-01L
120*186.5mm

◀ 7000K
35W

- 2800lm
- 250°
- 110-130V
- 10000h
- E27
- CRI 70
- LUZ





T135-45-01L
135*212.5mm

◀ 7000K

45W



QP-010-01
60*107mm

◀ 6500K

10W



DS64-04-02
64*145mm

◀ 2700K

4W

